

3D Modeling and Rendering with Google Sketchup and Kerkythea



Dan Eliot, Yorba Linda High School

About Me

- Dan Eliot
- Yorba Linda High School
- Placentia-Yorba Linda USD
- deliot@pylUSD.org
- LifeLongLearner.us



Presentation
Evaluation

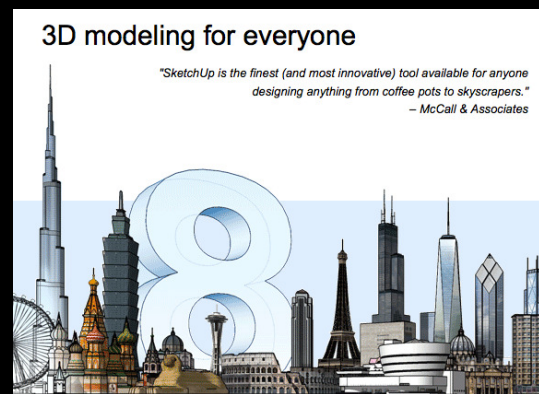
Presentation Goals

1. Discuss setup
2. Model chair - Sketchup
3. Render chair - Kerkythea
4. Discuss Final Animation
5. View student work
6. Links, Q&A, Evaluation



Google Sketchup Install

- Sketchup Version 8
- Windows XP, Vista, 7
- Mac OSX
- Linux (Wine)
- <http://sketchup.google.com/>



Sketchup Video Tutorials

- <http://sketchup.google.com/training/videos.html>

Video Tutorials

New! [Watch a video to learn what's new in SketchUp 8](#)

If you're new to building 3D models with Google SketchUp, order that they are listed. Though they're narrated in English.

Having trouble seeing our videos? You can [download the](#)



[New to Google SketchUp](#)
A great starting place for new users

[28 videos]



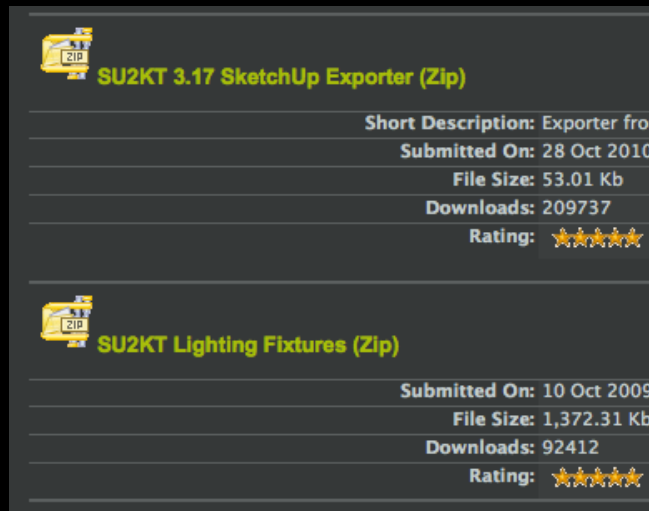
Kerkythea Install



- Kerkythea 2008 Echo
- Windows XP, Vista, 7
- Mac OSX
- Linux
- <http://www.kerkythea.net/joomla/>



Kerkythea Sketchup Plugin

- Exports model from Sketchup to Kerkythea
- <http://bit.ly/e4SVFJ>

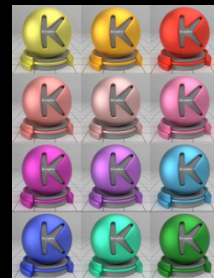
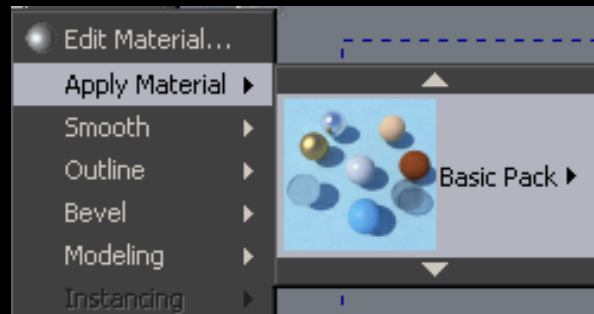


	SU2KT 3.17 SketchUp Exporter (Zip)
	Short Description: Exporter for
	Submitted On: 28 Oct 2010
	File Size: 53.01 Kb
	Downloads: 209737
	Rating: ★★★★★
	SU2KT Lighting Fixtures (Zip)
	Submitted On: 10 Oct 2009
	File Size: 1,372.31 Kb
	Downloads: 92412
	Rating: ★★★★★

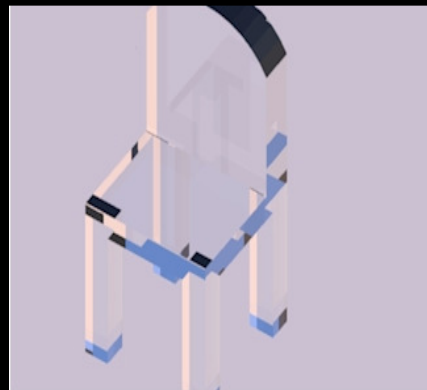
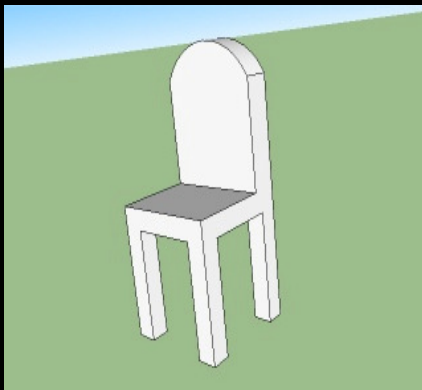
Kerkythea Materials (optional)

- Kerkythea comes with BASIC materials.
- Additional materials can be found here:

<http://bit.ly/dt85Ab>



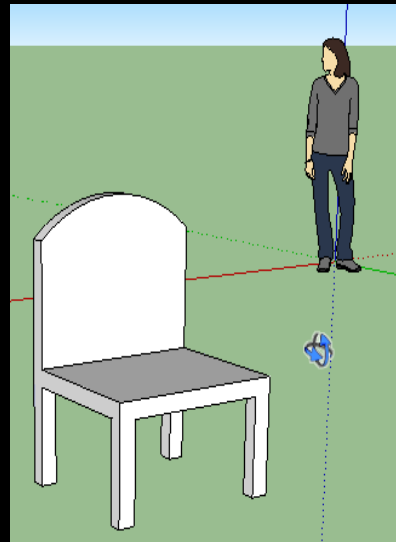
Demo: Model/Render A 3D Chair



Demo: Model/Render A 3D Chair

(1) Create a simple chair in Sketchup:

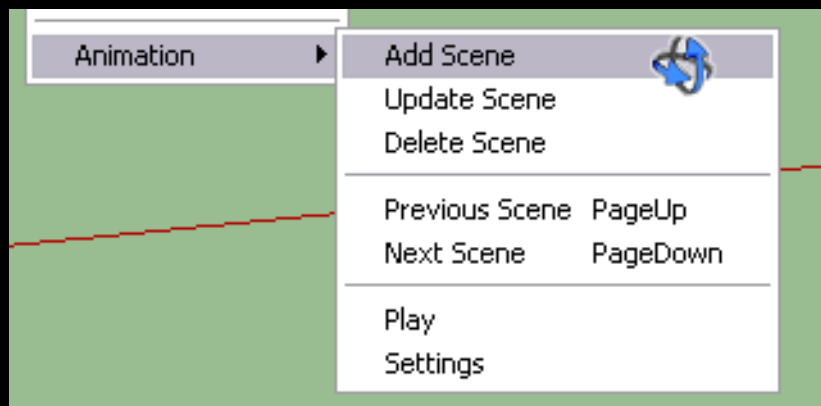
- Orbit, Pan, Zoom Tools
- Rectangle Tool
- Push/Pull Tool
- Pencil Tool



Demo: Model/Render A 3D Chair

(2) Create a “fly around” animation:

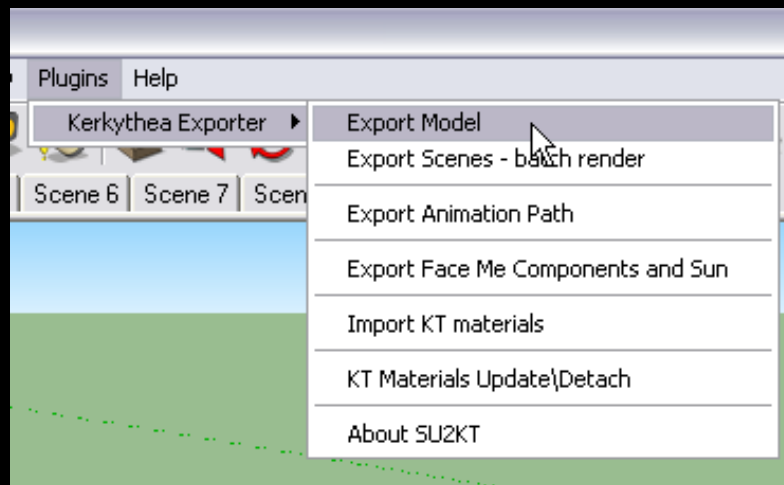
- View → Animation → Add Scene
- View → Animation → Play



Demo: Model/Render A 3D Chair

(3) Export model using Kerkythea plugin:

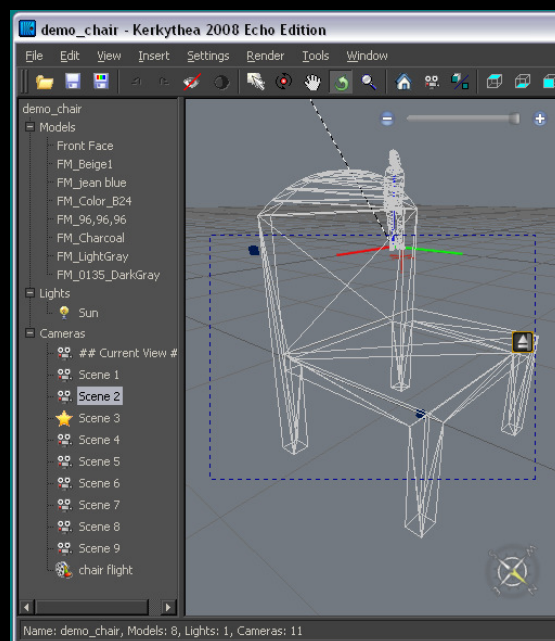
•Plugins → Kerkythea Exporter → Export Model



Demo: Model/Render A 3D Chair

(4) Open model in Kerkythea:

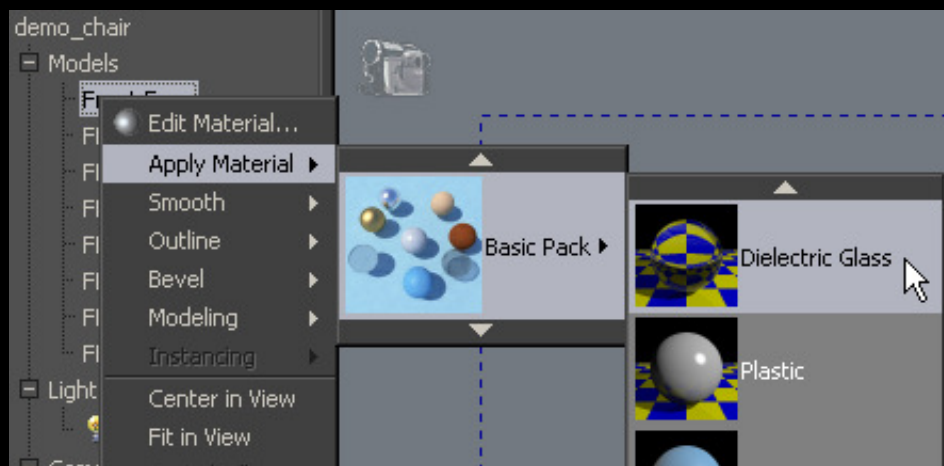
•File → Open



Demo: Model/Render A 3D Chair

(5) Apply materials to chair model:

- Right-Click → Apply Material



Demo: Model/Render A 3D Chair

(6) Set up walkthrough animation:

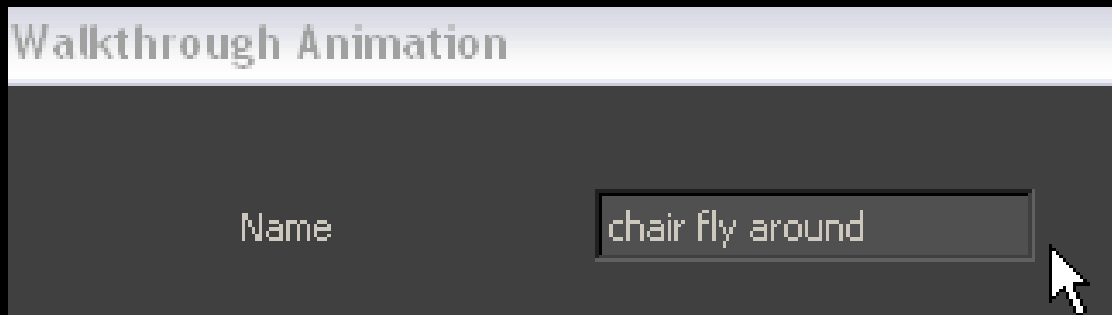
•Tools → Walkthrough Animation



Demo: Model/Render A 3D Chair

(7) Name walkthrough animation:

- Something like “chair fly around”



Walkthrough Animation

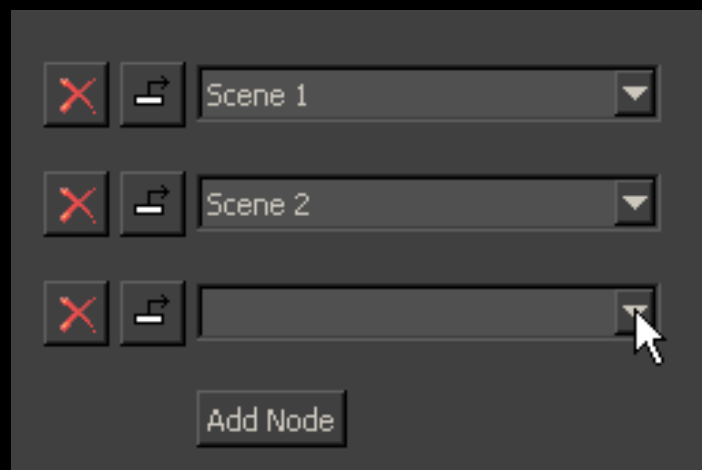
Name

A mouse cursor is visible over the text input field.

Demo: Model/Render A 3D Chair

(8) Add scenes IN ORDER to walkthrough:

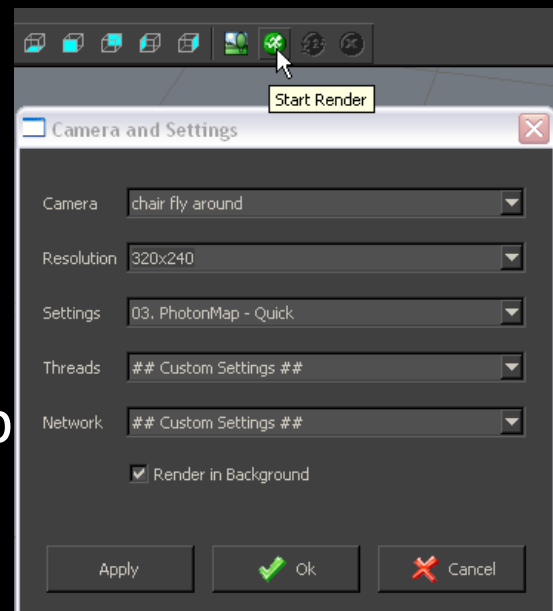
- Click “Add Node” to add scenes



Demo: Model/Render A 3D Chair

(9) Start Render:

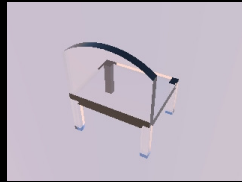
- Select your walkthrough as camera
- Start with 320x240
- Start with “PhotonMap - Quick”



Demo: Model/Render A 3D Chair

(10) Save frames for later use:

- Frames are named/rendered in order
- Rendering can take many hours!!!!
- Import into Flash, GIMP, UnFREEz, etc.



Student Work Video

- <http://www.youtube.com/watch?v=p7vVUJyO6MA>

(4:16 min)



Sketchup/Kerkythea Links

- Rendering Sketchup models with Kerkythea:

<http://www.alexschreyer.net/cad/rendering-sketchup-models-with-kerkythea/>

- SketchUcation website:

<http://sketchucation.com/>

- Sketchup 3D Warehouse:

<http://sketchup.google.com/3dwarehouse/>

Final Animation Software Links

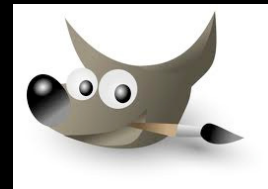
- Adobe Flash:

<http://www.adobe.com/education/k12/>



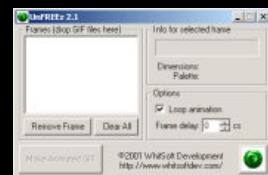
- GIMP:

<http://www.gimp.org/>

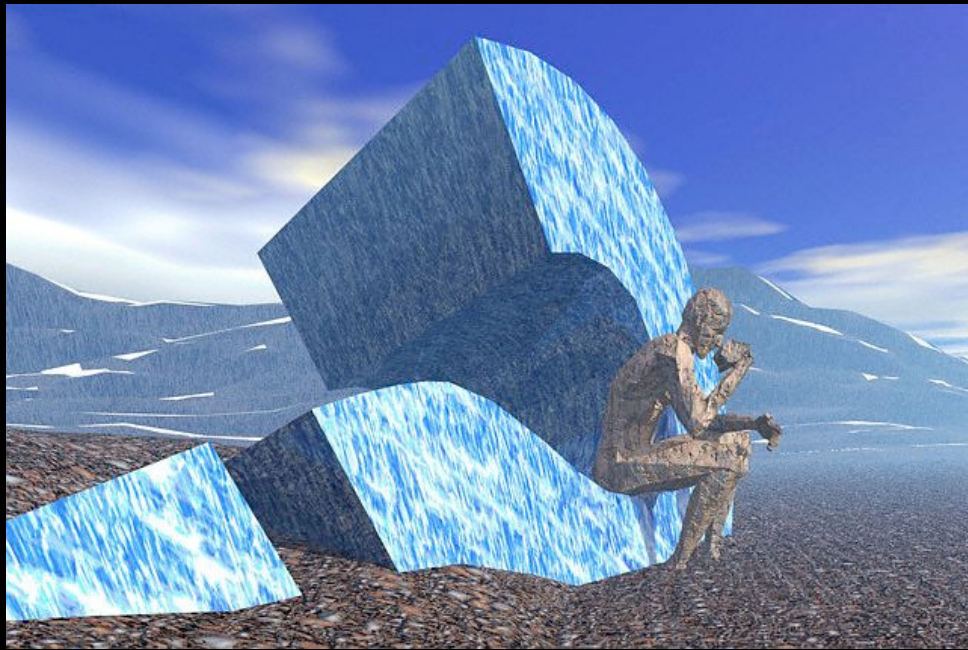


- UnFREEz:

<http://www.whitsoftdev.com/unfreez/>



Questions / Comments



Evaluation

Evaluation



2011.cue.org/

Evaluation



bit.ly/3dcue2011

